

Prairie Rose School Division

Carman Collegiate

Report of Continuous Improvement 2018-2019



As requested by Manitoba Education and Training

This document is available in alternate formats by request



Prairie Rose School Division

Carman Collegiate

Annual Report on Continuous Improvement 2018-2019

OVERVIEW

Carman Collegiate services a large geographic area where approximately 63% of our students are bussed to the Collegiate. We are a small school that continues to offer a full slate of courses in order to provide top quality education to our students. Within our programming, we offer all academic subjects, Industrial Arts/Human Ecology programming and top tier athletics. Carman Collegiate prides itself in providing all students with the opportunities present in a metropolitan high school.

Admin Team

Jeffrey Latimer

Evan Williams

Jesse Thomaschewski

Mission

Prairie Rose School Division is dedicated to developing lifelong learners for responsible global citizenship.

Vision

As learners advance through early, middle and senior years in Prairie Rose School Division they will experience a broad education relevant to their individual needs; enabling them to thrive in an increasingly complex world.

Learners will be emotionally invested, actively engaged, and reflective in their learning.

School Staff Profile

Positions	FTE	Position	FTE	Position	FTE
Administration	1.5	Resource	1.5	Guidance	1.2
Teachers	21.5	Educational Assistants	12	Career Counsellor	.5





Disaggregated data for students designated as English as an Additional Language (EAL) and self-declared Aboriginal Students.

Disaggregation	Number of students	Percentage of student population
English as an Additional Language	9	3%
Self-declared Aboriginal	21	6%

Education for Sustainable Development (ESD)

Prairie Rose School Division School Divisional Planning Template Education for Sustainable Development					
<p>Education for Sustainable Development Grant: is to support schools/school divisions in their efforts to incorporate Education for Sustainable Development (ESD) into all aspects of school division and school activities, operations, and programming. The ESD grant will be used by each school to support student learning in the domains of curriculum, teaching, learning, and planning and will encompass the desired outcomes in these domains in accordance with the "Domain Framework for Whole System Approach to ESD". Each school will receive funds (\$700) through the divisional categorical grant and will submit plans to the division by November 30th of the current school year.</p>					
<i>Objectives/Outcomes</i> <small>Specifies statements about what we want to accomplish in the following areas:</small>	<i>Strategies/Actions</i> <small>Specifies actions to be taken as part of each objective</small>	<i>Timeline</i> <small>Date for implementation</small>	<i>Responsibility</i> <small>Who is responsible for doing each action?</small>	<i>Indicators</i> <small>How we will know we have reached our objective (based on S.M.A.R.T. criteria)</small>	<i>Funding Requirements</i>
Focused in grade 10 Geography - Cluster 3 " Food From the Land"	Will be focused on maintaining, and expanding our box gardens on the east side of the school. Students will actively build, plant, and maintain the gardens. In the fall the students will harvest the crop.	The fall will be dedicated to building and install of the gardens. The winter months will be used to research and plan for proper planting.	Classes to be involved will be Geography, Agriculture, and Wood Working.	Expanded and built the box gardens on the east side of the school. Planting, maintaining, and harvesting the gardens.	Funds required would be to support the garden shed for storage of materials, and supplies. This would be approximately \$6000, \$3000 for concrete and \$3000 for building supplies. This garden would also serve as a small green house to start plants.

2019-2020 Education Plan Highlights

This upcoming school year the collegiate staff will focus on literacy, numeracy, and wellness. The collegiate staff will continue with working with our literacy and numeracy coaches and will focus on both student and staff wellness

Priorities

- Literacy
- Numeracy
- Wellness



Prairie Rose School Division

Carman Collegiate

Annual Report on Continuous Improvement 2018-2019

Goals

For our students to excel in literacy, numeracy, and wellbeing. The Collegiate will provide monthly support through our early dismissal, and professional development time.

School Website: www.prsdmb.ca School Plan: 2018-2019 Division Profile and Annual Planning



NUMERACY

Accomplishments

- Middle Years trained in PRIME math.
- Training in the area of assessment (Grade 3 and 7 provincial assessment and divisional assessments grade 2 and 6) with focus on identification, analysis of data, and instructional practice
- Divisional team meetings with schools to review school plans and discuss detailed supports needed, and develop a structure for supports
- Teacher leaders introduced a teacher learning website to provide access to instructional resources for numeracy including digital resources
- All grade 9 math teachers (PLC) met to discuss and identify key math foundations, assessment tools, and instructional practices that increase student success; continued pilot project with Manitoba Rural Learning Consortium, second year (mRLC)
- Introduction of digital resources (3-D printer, robotics, coding) to enhance engagement and understanding of numeracy concepts
- All grade 6 math teachers (PLC) met to discuss and identify key math foundations, assessment tools, and instructional practices that increase student success
- High school math teachers developed course outline templates grades 9-12 and formative and summative assessment samples

Next Steps

- All grade 9 math teachers (PLC) will sustain practices from the mRLC project
- Continued training in the area of assessment (Grade 3 and 7 provincial assessment and divisional assessments grade 2 and 6) with focus on identification, analysis of data, and instructional practices
- All grade 6 math teacher (PLC) will continue to meet and discuss and identify key foundations, common assessment tools, and instructional practices that increase student success



Prairie Rose School Division

Carman Collegiate

Annual Report on Continuous Improvement 2018-2019

- All Grade 7 and 8 math teachers (PLC) will be part of a MRLC project to identify key foundations, common assessment tools, and instructional practices that increase student success
- Continue with all year single credit Math in grade 9 – common assessment/ Provincial PLC
- Schedule congruent math time for Middle Years' program.
- Grade 6, 7 & 8 transition meetings to discuss math and student achievement levels.
- Grade 10 Introduction to Applied and Pre-Calculus all year
- Grade 11 Applied and Pre-Calculus math all year
- Grade 12 Pre-Calculus new format of time and a half
- Continue to offer 45S Calculus
- Meet with Numeracy leader during Early Dismissal to discuss yearlong planning.
- Continuing Strong Beginnings for our Middle Years
- Focused RTI for all Middle Years through learning Sprints with a focus on Numeracy and Tier 2 Interventions.
- Continuation of 'My Blue Print' for career exposure.

GOALS

- **BY JUNE 2022 – 85% OF GRADE 7 WILL DEMONSTRATE NUMERACY SKILLS AT/OR ABOVE GRADE LEVEL.**
- **BY JUNE 2020, HAVE ALL GRADE 12 STUDENTS ABOVE PROVINCIAL AVERAGE ON FINAL ASSESSMENT**
- **BY SEPTEMBER 2020 – 60% OF ALL STUDENTS WILL BE ENROLLED IN EITHER APPLIED OR PRE-CALCULUS**

Carman Collegiate will strive to meet all of the Provincial Aspirational Targets

Numeracy

Middle Years Provincial Assessment

By January 2028, 80 percent of students will meet mid-grade performance in all sub-competencies in the Grade 7/8 provincial assessments for number sense, and number skills.

Grade 9 Successful Credit Completion

By June 2023, 95 percent of all Grade 9 students will receive appropriate educational programming to ensure they successfully complete their Grade 9 credit in Mathematics.

Grade 12 Provincial Tests



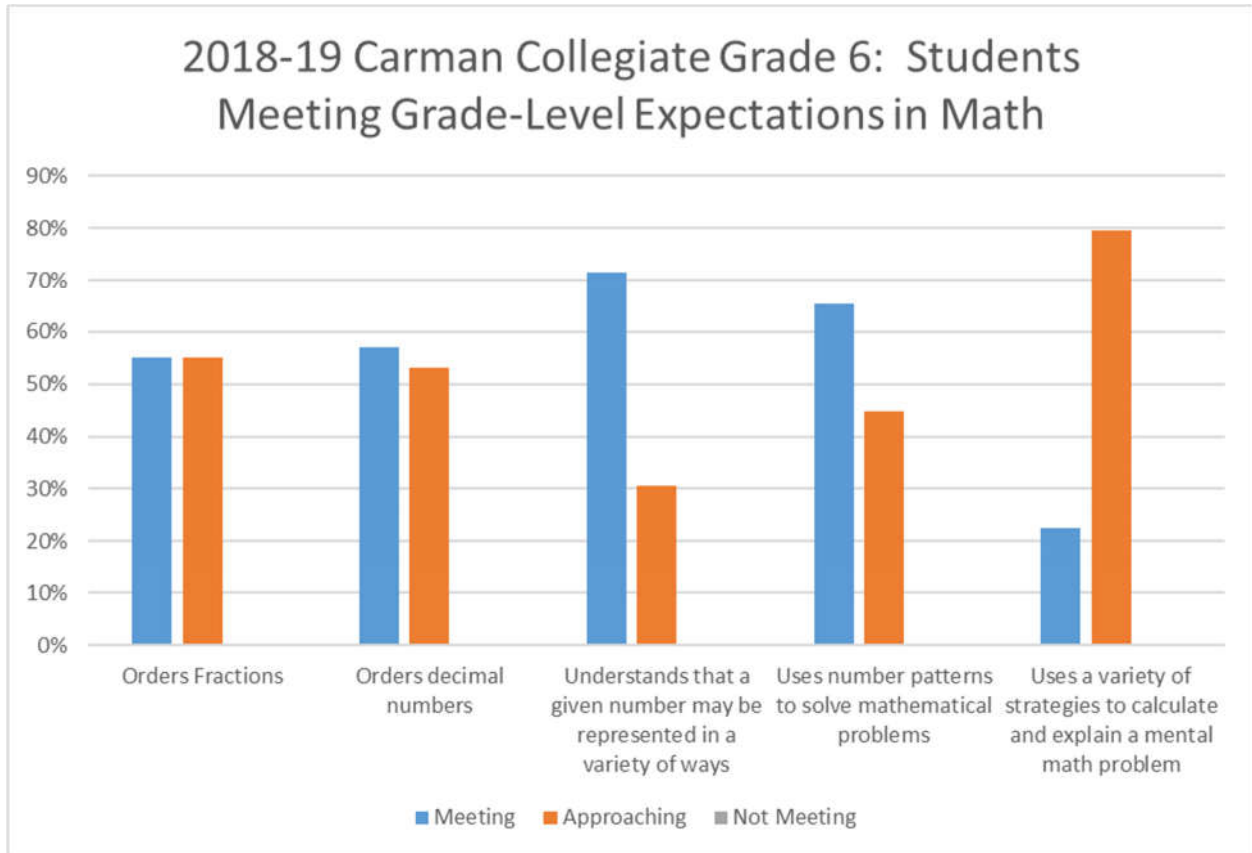
Prairie Rose School Division

Carman Collegiate

Annual Report on Continuous Improvement 2018-2019

By June 2028, the average mark on Grade 12 provincial tests in Mathematics will be 80 percent.

INDICATORS:



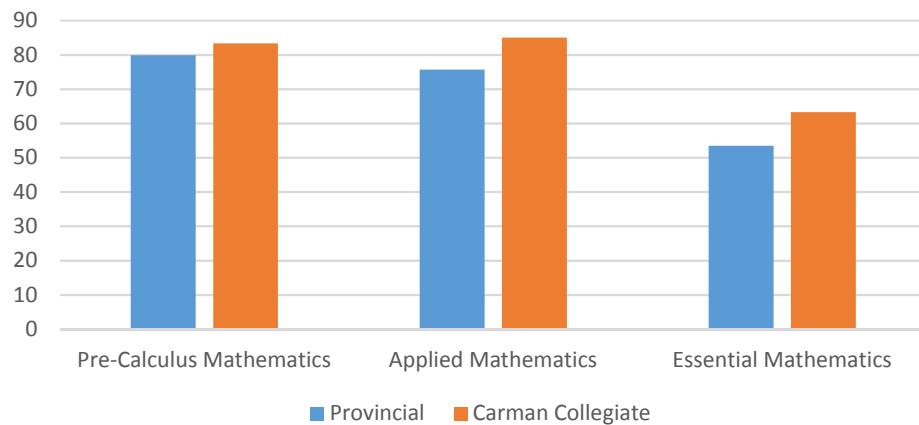


Prairie Rose School Division

Carman Collegiate

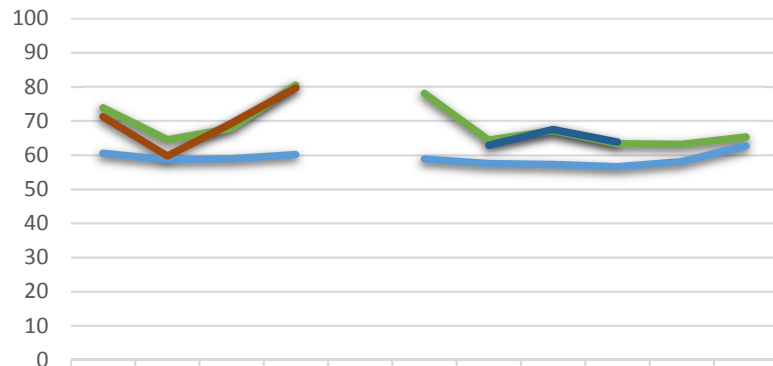
Annual Report on Continuous Improvement 2018-2019

Grade 12 Provincial Tests in Mathematics
Pass Rates



Grade 12 Provincial Tests: Average Marks

CARMAN COLLEGIATE



	Jan/J un 2009	Jan/J un 2010	Jan/J un 2011	Jan/J un 2012	Jan/J un 2013	Jan/J un 2014	Jan/J un 2015	Jan/J un 2016	Jan/J un 2017	Jan/J un 2018	Jan/J un 2019
APPLIED MATH. (PROVINCIAL)	60.5	58.7	58.9	60.2		58.9	57.5	57.3	56.6	58.1	62.7
APPLIED MATH.	73.9	64.5	67.9	80.5		78.1	64.4	67.3	63.3	63.2	65.3
FEMALE	77.7			81.5			62.9	67.5	63.9		61.6
MALE	71.3	59.8	69.3	79.7			66.1			67.8	

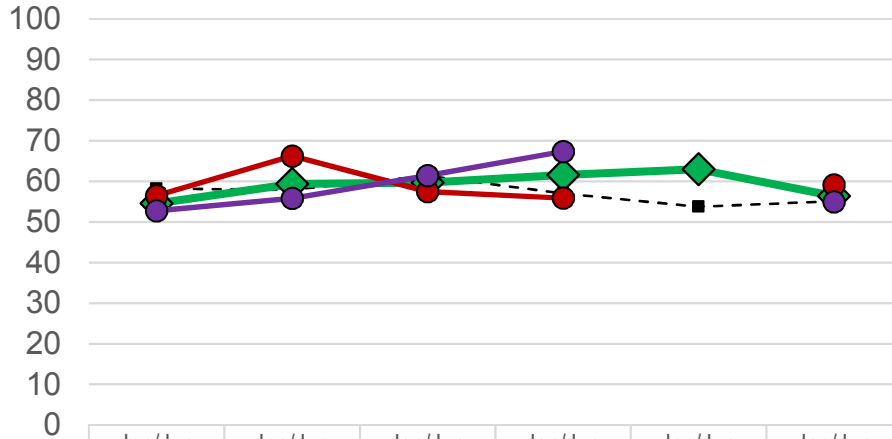


Prairie Rose School Division

Carman Collegiate

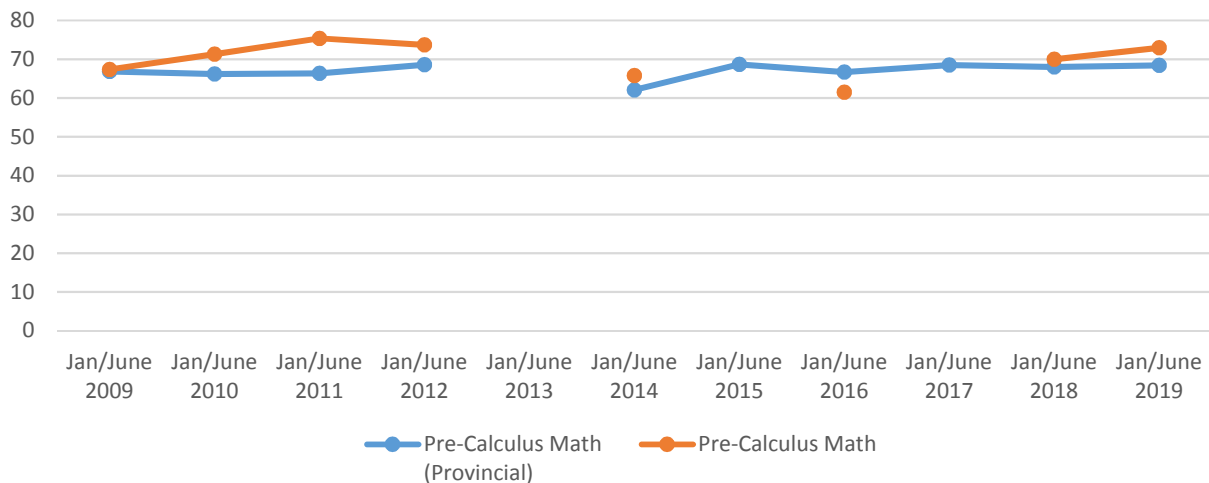
Annual Report on Continuous Improvement 2018-2019

Grade 12 Provincial Tests: Average Marks
CARMAN COLLEGIATE



	Jan/June 2014	Jan/June 2015	Jan/June 2016	Jan/June 2017	Jan/June 2018	Jan/June 2019
ESSENTIAL MATH. (PROVINCIAL)	58.2	58.0	61.4	57.0	53.7	55.1
ESSENTIAL MATH.	54.5	59.4	59.7	61.6	63.0	56.4
FEMALE	56.4	66.3	57.5	55.9		59.2
MALE	52.8	55.8	61.5	67.4		55.0

Pre-Calculus Math Average Marks





LITERACY

Accomplishments

- New ELA Curriculum implementation.
- Senior Years English Language Arts teachers (PLC) developed “Reading and Viewing Achievement Standards” and “Writing Achievement Standards” for grades 9-12
- Continued professional development (PLC) in the area of assessment (Grade 3, 4, 8, provincial assessment and divisional assessments)
- Common Professional Learning Groups (PLG) formed at schools and across the division
- Continue with Grade ELA rubric for all grades.

Next Steps

- Transition meetings to discuss literacy needs.
- Continue strategy of Daily edits
- Continuation of Grade 10 Reading is Thinking
- Continue grade 11 Transactional ELA
- Continued Focused PLC time for MY and SY focused on data
- Middle Years RTI Tier 2 Interventions through advisory time.

GOALS:

- By June 2022, the PRSD grade 12 divisional mean score in the grade 12 Language Arts Standards Test will be at or above the provincial mean score.
- By June 2022, 75% of PRSD students will be reading at/or above grade level with regard to their ability to read and comprehend text in a variety of forms (divisional data); provincial grade 3 and 8 data will indicate 75% meeting and 10% approaching reading comprehension.

Literacy Provincial Aspirational Target

Middle Years Provincial Assessment

By January 2028, 80 percent of students will meet mid-grade performance in all sub-competencies in the Grade 7/8 provincial assessments for reading comprehension, and expository writing.



Prairie Rose School Division

Carman Collegiate

Annual Report on Continuous Improvement 2018-2019

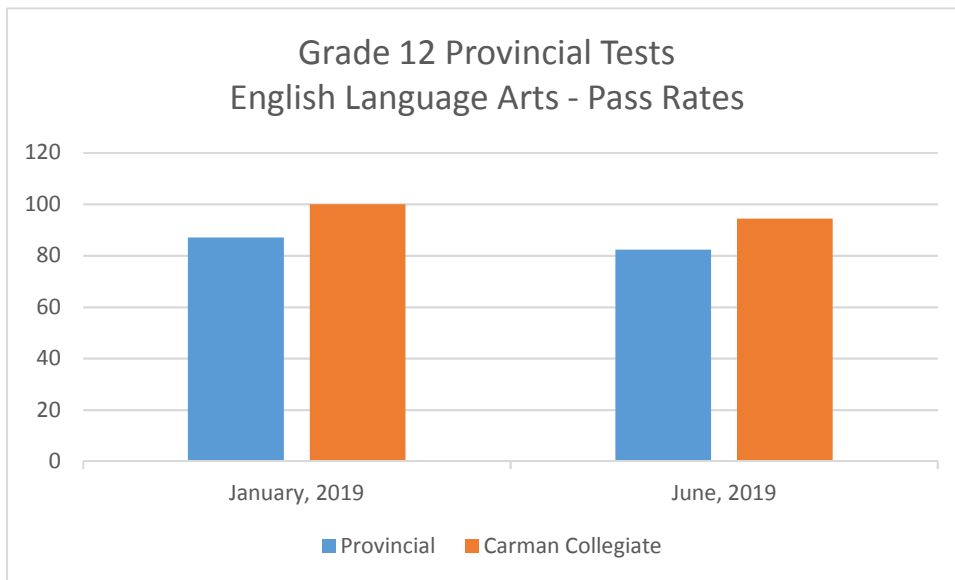
Grade 9 Successful Credit Completion

By June 2023, 95 percent of all Grade 9 students will receive appropriate educational programming to ensure they successfully complete their Grade 9 credits in English Language Arts (ELA).

Grade 12 Provincial Tests

By June 2028, the average mark on Grade 12 provincial tests in Language Arts will be 80 percent.

INDICATORS:



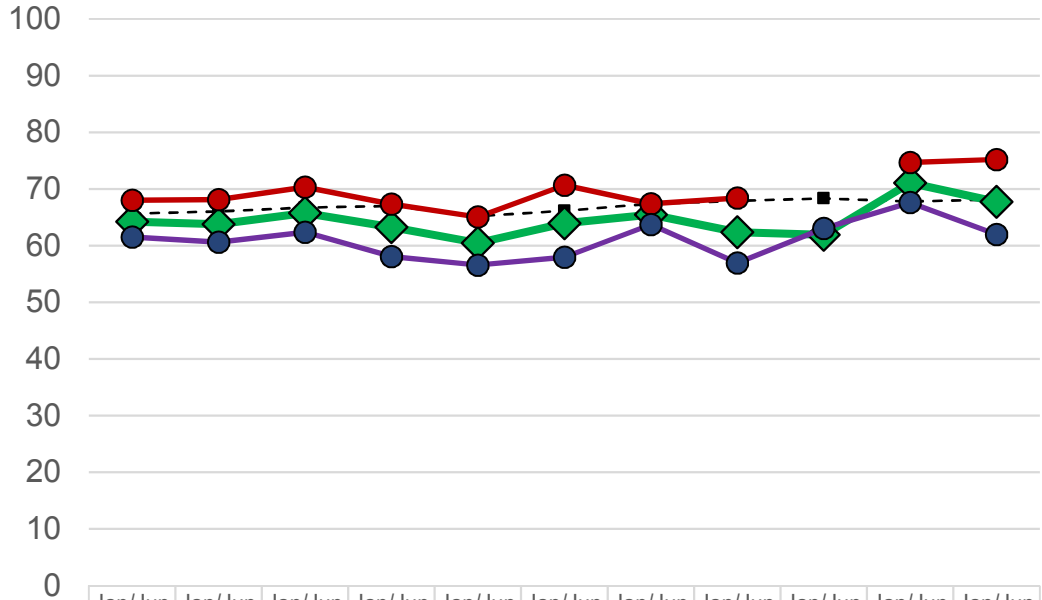


Prairie Rose School Division

Carman Collegiate

Annual Report on Continuous Improvement 2018-2019

Grade 12 Provincial Tests: Average Marks
CARMAN COLLEGIATE



	Jan/Jun 2009	Jan/Jun 2010	Jan/Jun 2011	Jan/Jun 2012	Jan/Jun 2013	Jan/Jun 2014	Jan/Jun 2015	Jan/Jun 2016	Jan/Jun 2017	Jan/Jun 2018	Jan/Jun 2019
- ■ - ELA (PROVINCIAL)	65.7	66.1	66.7	67.0	65.2	66.1	67.4	67.9	68.3	67.8	68.1
◆ ELA	64.2	63.8	65.8	63.3	60.5	63.9	65.5	62.4	61.9	71.1	67.7
● FEMALE	68.0	68.1	70.3	67.3	65.1	70.6	67.4	68.4		74.7	75.2
● MALE	61.5	60.6	62.3	58.0	56.6	58.0	63.7	56.9	63.0	67.6	61.9

- Continue with Barton program for students with Dyslexia – Grade 6/7/8 – Has expanded to high school students – Working with school psychologist to assist with intervention
- Involve literacy leader with critical thinking tasks
- Gates/McGinty continuation.
- Grade 8 Provincial Assessment
- Increased ELA Provincial exam results



WELLNESS

Achievements -

- Creation of Junior student council
- Participated in the “Wellbeing to Well becoming” Project for grades 8/created baseline data
- Each middle years classroom received two-three programming lessons sets. This includes programs such as Kids in the Know, Zones of Regulation, Career Exploration, Mind Up, Stress Reduction and other targeted lessons
- Installed 2 sensory paths for self-regulation

Next Steps

- Continue divisional programming goal of Kids in the Know grades 6-10
- Utilize AFM counsellor to provide proactive lessons to Middle Years students
- Expand W2B project across our Middle Years
- Senior and Junior Wellness Days
- Transition of 6-12 programming – buddy system.
- Baseline data collected in Middle Year’s through “Minute Survey” – this data is used to inform programming needs for student grade levels
- Divided Middle Years/Senior Years Student Support teams (Resource/Guidance)
- Middle Years exposure to career counsellor and activities
- Continue to make student club/groups based off data collection and student want/need.
- Gather baseline suspension and MY data

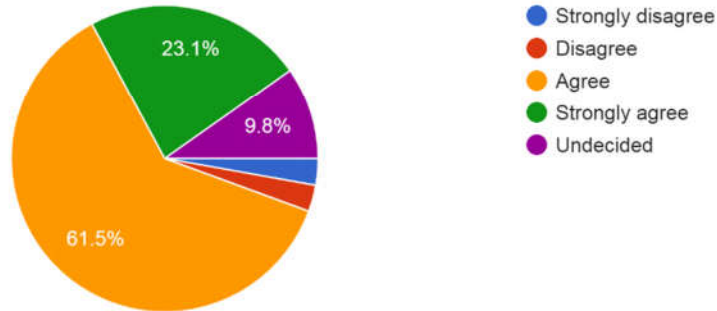
Indicators

- Reduced suspensions
- Increase of school/club participation meeting
- Students self-referrals dropping from “high-medium” to “medium-low” indicating an increase in resilience and independence.
- Increase sense of Belonging/Safety/Acceptance as outlined in W2B data, Minute Surveys,



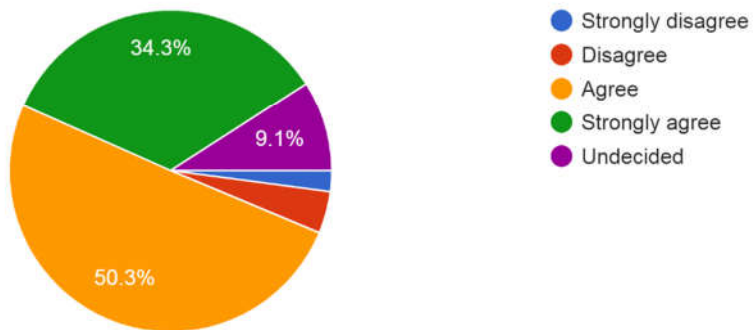
Carman Collegiate is a friendly and welcoming place.

143 responses



I feel accepted by the adults at my school.

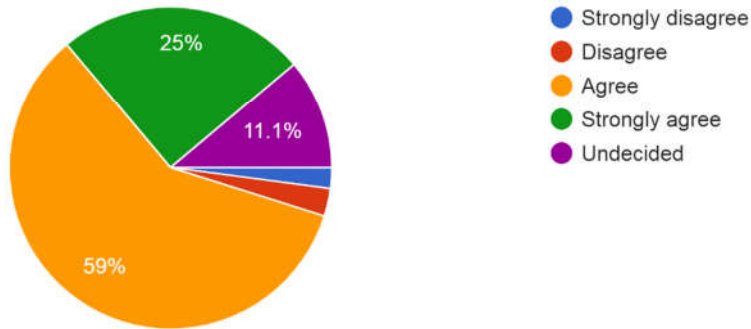
143 responses





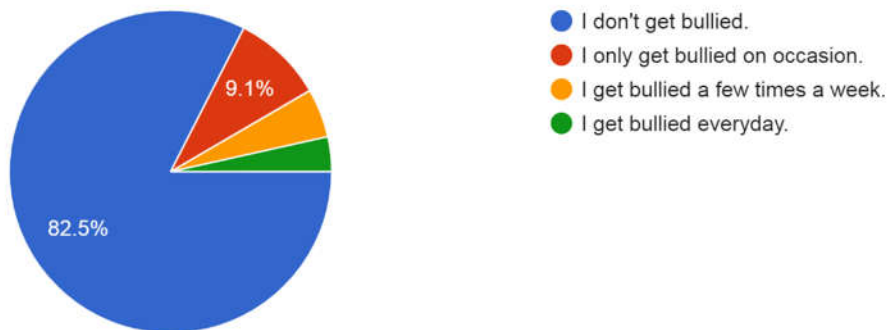
I feel safe at Carman Collegiate.

144 responses



Bullying is when someone is intentionally mean to you on a regular basis. If you are someone that gets bullied, how often does it occur?

143 responses





Prairie Rose School Division
 Carman Collegiate
 Annual Report on Continuous Improvement 2018-2019



Prairie Rose School Division and Carman Collegiate
 W2B Project Planning Template

Goal / Priority Statement:

<i>Objectives/Outcomes</i> <small>Specific statements about what we want to accomplish in the following areas:</small>	<i>Strategies/Actions</i> <small>Specific actions to be taken as part of each objective</small>	<i>Time line</i> <small>Date for implementation</small>	<i>Responsibility</i> <small>Who is responsible for doing each action?</small>	<i>Indicators</i> <small>How will we know we have reached our objective (based on S.O.A.S.T. criteria)</small>	<i>Funding Requirements</i>
Educational Transitions	<ul style="list-style-type: none"> - Middle Years Environment - Guidance Office/Privacy screen - School Tour/ MY Dance - Middle Years Wellness Day - Data Collection – “10 things I wish I knew before coming to CC” - Safe Classroom Spaces - Furniture/Maker Space (Flex Seating, self-regulation) – standing desks/ exercise equipment - Grade 8 to 9 - Career Counsellor Credit meetings 	<ul style="list-style-type: none"> - Spring/May - Spring/May 	<ul style="list-style-type: none"> - Administration - Wellness committee - Guidance/Admin - Career Counsellor 	<ul style="list-style-type: none"> - W2B data collection 	<ul style="list-style-type: none"> - \$250 – Frosted Blinds - Prizes - Snack for Wellness (\$200.00) - Release time/substitute (A.A.W) - \$2000.00
Exposure	<ul style="list-style-type: none"> - Career Development - Adult relationships - GSA 	<ul style="list-style-type: none"> - Fall 	<ul style="list-style-type: none"> - Career Counsellor/Resource - Guidance 	<ul style="list-style-type: none"> - Skills Manitoba (Boat race) – CMA Hovercraft - Strong beginnings 	<ul style="list-style-type: none"> - \$200/event including In house - \$500- Snack/ Transportation/Event Participation
Experiences	<ul style="list-style-type: none"> - Lunchtime Clubs - Hockey/sketch club/girls club/coding - Intramural Sports - Zones of Regulation - Mind Up - Kids in the Know - Strong Kids/Teens 	<ul style="list-style-type: none"> - Sept – June - Sept – June 	<ul style="list-style-type: none"> - Guidance 		<ul style="list-style-type: none"> - \$100/ Purchase of T-shirts - \$120 for programs